

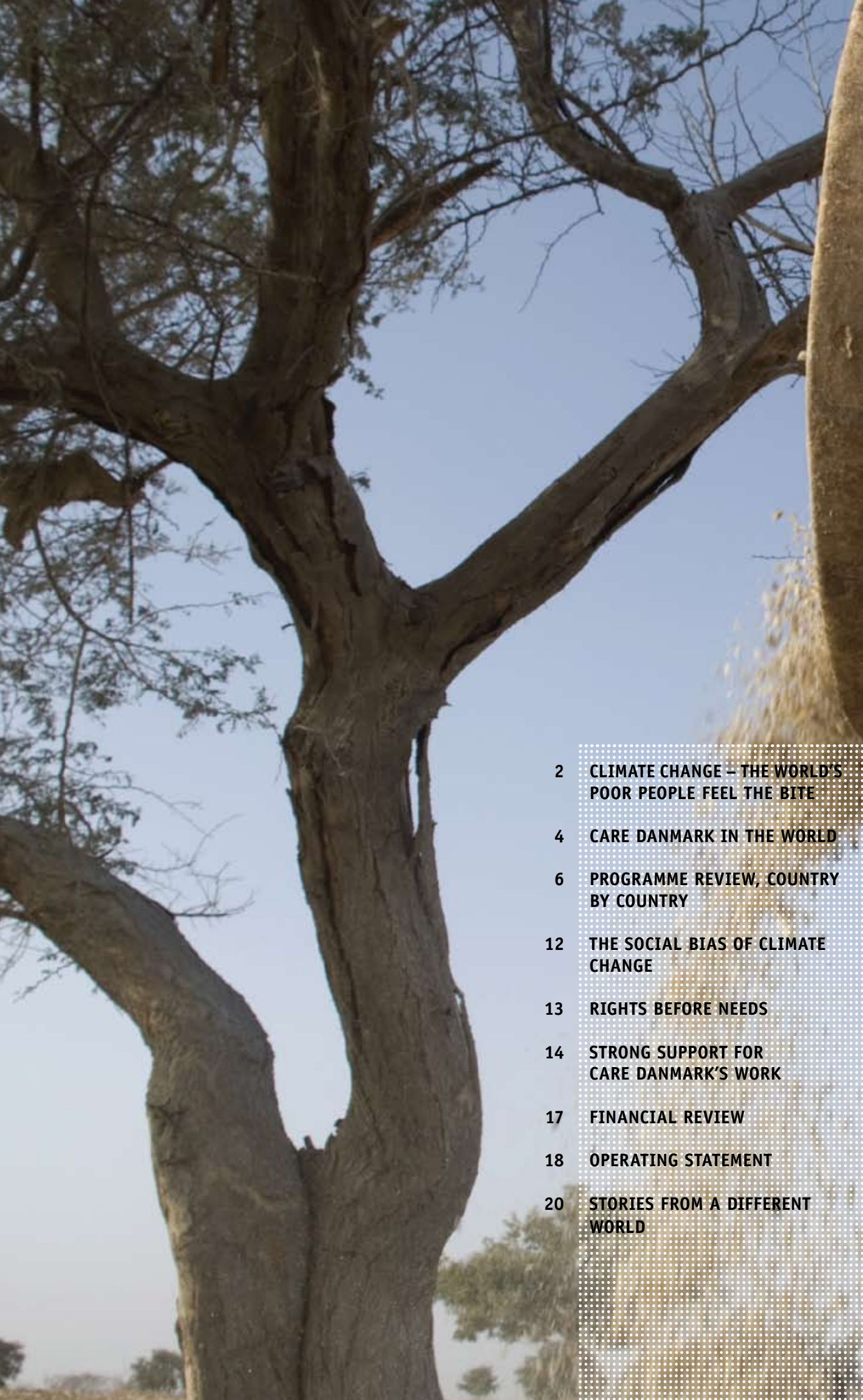


BEFORE
THE DISASTER

CARE DANMARK

Annual Review 2007





2	CLIMATE CHANGE – THE WORLD'S POOR PEOPLE FEEL THE BITE
4	CARE DANMARK IN THE WORLD
6	PROGRAMME REVIEW, COUNTRY BY COUNTRY
12	THE SOCIAL BIAS OF CLIMATE CHANGE
13	RIGHTS BEFORE NEEDS
14	STRONG SUPPORT FOR CARE DANMARK'S WORK
17	FINANCIAL REVIEW
18	OPERATING STATEMENT
20	STORIES FROM A DIFFERENT WORLD

**PATRON**

His Royal Highness
Prince Joachim is the
Patron of CARE Denmark

**NATIONAL DIRECTOR**

Niels Tofte is the National
Director of CARE Denmark

BOARD OF DIRECTORS**CHAIRMAN**

Ole M. Jung
Director

**DEPUTY CHAIRMAN**

Christian Nissen
Former Director General



Orla Grøn Pedersen
Director



Leo Bjørnskov
Former State Secretary



Susanne Larsen
Director



Flemming Frandsen
Professor



Andreas Hastrup
Landowner



Svend Kaare Jensen
Managing Partner



Charlotte Münter
Director



Steen Uhrskov
Director



Gunhild Lange Skovgaard
CEO, Professor, Dr. Med. Sci.

**ALTERNATE**

Dorte Arnoldi
Director

**ALTERNATE**

Per Pinstrup-Andersen
Professor

BOARD OF DIRECTORS' R

It was quite difficult to go through 2007 without hearing about climate change – for CARE Denmark it was impossible. The UN Panel on Climate Change published a number of reports through the year documenting: 1 – that climate change is real; 2 – that it is man-made; 3 – that the world's poorest people are disproportionately feeling its impact; but 4 – that we still have time to do something to slow down the changes.

With these messages, climate change was placed firmly on international and domestic agendas. In Denmark, the debate is even more topical as we will be hosting the climate summit in 2009, where the international community will agree on a replacement for the Kyoto Protocol and thereby develop a new framework for how the world in unison should bring the climate challenge under control.

Climate change will also become central to CARE Denmark's work in the field, as it already has become at the secretariat in Copenhagen and for our climate experts in Nairobi. CARE Denmark will be leading the climate efforts on behalf of CARE International. It is a great responsibility, but through its 20 years of existence, CARE Denmark has been working on strengthening the world's poorest people who depend deeply upon natural resources. Climate change will push these people, who are already living on the edge of what is possible, over the brink. Therefore, CARE Denmark should draw on its unique position and knowledge to put the most vulnerable people on the climate agenda. And we must do even more in our field of expertise, which is to create sustainable development so as to ensure an enduring balance between nature and people.

Africa on the edge – but at the very centre

In 2007 we had a serious taste of what, according to experts, we can expect even more of – droughts and floods. The monsoon was fierce in Asia. The annual floods in Vietnam, Nepal, India, Pakistan and Bangladesh were worse than usual and demanded great efforts from organisations such as CARE International. In Africa, droughts stretched far into the rainy season, and then all the rain of the season fell in a very few weeks. Twenty-two African countries were affected by floods.

Africa is particularly vulnerable to a harsher climate. The floods in 2007 will leave their mark well into 2008, as in many places the already meagre harvest has been completely lost, so that hundreds of thousands of people are exposed to serious risk of famine. In CARE Denmark, we say that emergency aid is help too late. Disaster prevention is not only the right thing to do in a moral sense, but also the most responsible thing to do in an economic sense. This is where CARE Denmark's expertise is so necessary. We must strengthen the world's most vulnerable people to make sure that they are not pushed all the way over the edge, when climate change begins to bite.

CARE Danmark is not alone in its focus on Africa as particularly exposed. With its 'Africa Strategy', the Danish Government has decided to put that continent at the centre of Danish aid efforts. The issues are 'more and better aid', climate change, increased regional integration and cooperation between the EU and Africa, and finally, a sharper focus on young people and women. In CARE Danmark, we know how important women are to development – and we know how long, tortuous and some times impassable the road can be for African women. In Africa, women own only one per cent of real property, which generally means land, even though they are responsible for 80 per cent of food production. Not only are women entitled to development and a life in dignity – they also constitute a 'good investment'. They are full of will-power and desire to learn. We know that their commitment and sense of responsibility is real, but we also know that they need resources.

Poor women must be given more control of natural resources, such as water, land and forest, and CARE Danmark works with dedication on strengthening their rights, participation and influence in decision-making. Among the methods are the popular micro-finance groups. To put it all in a phrase, we work on strengthening people's ability to help themselves.

CARE Danmark in the field

In 2007, the Board of Directors went to Ghana to see how people are being empowered to help themselves. Far up in the north-eastern part of the country, towards the border of Burkina Faso, where the year's floods had only just sunk through the red soil, the Board members saw how CARE works in a focused and determined way on strengthening the position of women in the local communities. It also became clear how important sustainable management of natural resources is to the poorest people of Ghana, who lost a year's harvest in the floods.

CARE Danmark's sustainable development efforts are immeasurably important to these poor farmers – not only in Ghana, but in all our programme countries. It is therefore with great satisfaction that we can report that in 2007 CARE Danmark's project portfolio grew once again. During the year, the Board approved eight new projects in the field, and at the time of writing we have already succeeded in securing finance for five of them. The funds will come from DANIDA, the EU and a number of other donors.

And on the subject of donors, it is worthy of mention that for the first time CARE Danmark succeeded in being chosen as the cause to be supported by the popular 'Operation Day's Work', in fierce competition with other humanitarian organisations. Operation Day's Work is an annual collection day when upper secondary school and 10th-year students sell their labour for one day and donate their pay to a humanitarian project. Last year, the amount collected was DKK

7 million.

In 2008, the funds from Operation Day's Work are to be spent on furthering the work started by CARE Danmark in Niger during the previous project 'Children of the Desert'. The desert schools are not only to teach children to read and write, but also to strengthen their ability to influence their own lives – in particular in the case of girls and ethnic minority children. But the pupils also acquire specific, practical skills – for instance, in methods of cultivation and livestock-keeping.

Support at home for support abroad

The aim of the current Danish government is to increase development aid. This is positive. The new challenges which climate change poses, especially to Africa, create a need for more support from the parts of the world that have run up the climate bill – including Denmark. Accordingly, Denmark should make an extra effort to strengthen the poorest people of the world.

In this connection, we are pleased that the value of CARE Danmark's framework agreement with DANIDA has again been increased, from DKK 38 million in 2007 to DKK 43 million in 2008.

Major donors can make a world of difference. To CARE Danmark, the support we receive from individual Danes is indispensable. Not only do the humanitarian organisations in Denmark face an invariable requirement from the government to have popular backing, but in CARE Danmark, we actually believe it to be fundamental to our work abroad that we have support at home. CARE Danmark carried out a number of different campaigns in 2007 that gave Danes an opportunity to get to know us and to support our work. We launched a lottery. In cooperation with the development organization Ibis, we once again held a national collection day, and we opened a shop on the internet where Danes can buy 'gifts that are guaranteed not to be exchanged'. During all the campaigns, we have seen great support for our cause.

We have made important contacts with businesses, and with our gift concept, we entered the media spotlight.

With these activities, we set a new record in our number of contributors, which in 2007 reached a total of 22,873. In all, CARE Danmark raised DKK 17 million from private sources. This corresponds to 22 per cent of CARE Danmark's total revenue.

The total surplus for the year amounted to DKK 934,000, which is a satisfactory consolidation of the course which the Board of Directors has determined for CARE Danmark's financial affairs.

With this support and backing, CARE Danmark is able to continue its focused work on strengthening people's ability to help themselves and thereby strengthening the very poorest people of the world in their fight against poverty, discrimination and an even harsher climate!

INSTITUTIONAL DONORS

Danida, EU, UN.

FOUNDATIONS

Nordea Danmark Foundation, the Tuborg Foundation, the Oticon Foundation, Augustinus Foundation, the Novo Nordisk Foundation, Krista og Viggo Petersen's Foundation, Fabrikant Mads Clausen's Foundation, the Foundation of 17.12.1981, the Bechgaard Foundation, Erik Thunes Legat, JL-FONDET, Skandinavisk Tobakskompagni's Gavefond, Henry Donsrud's Fond, Torben og Alice Frimodt's Fond, Grosserer Harald Jensen og hustrus Fond, Familien Hede Nielsen's Fond, Tage Lund-Larsen og hustru Claudine Lund-Larsen's Fond, Gerda Laustens' Fond, Svend Chr. Olsen's Familiefond, Snedkermester Axel Wichmann og fru Else Wichmann's Fond.

CORPORATIONS

Alforsyning, Amager Kiropraktik Center, Astrologihuset, Betty Garn, Billeje.dk, Bolbro Apotek, Borgens Forlag A/S, Borupgård Kiosk, Boutique Gaveidé, Brdr. Jørgensen Instr. A/S, Byttebixen, Charkel, Cimbria A/S, ClearCode Consulting, Code, Danisco, Dansk Ingeniørservice A/S, the Danish Metalworkers' Union, Dan-Transducer ApS, Datagraf Auning A/S, Den Blå Avis, Det Grønne Køkken, Diamant Klip, DK International A/S, DP Group, Danish Sensor Engineering, Egeskov Bilværksted ApS, Egtved Revisionskontor A/S, Elite Købmand, Emilia Hudpleje, Era Ora A/S, Erhvervsformidling A/S, FA A Keldorf, Falck, Farvecentrum, Ferritslev Apotek, F-J Electronics, Free Comics, Galerie Cobra, Glostrup Kiropraktorcenter, Helle Kristensen (Jeweller), Happy Chicken, Hobro Imerco, Human Balance, I4B ApS, Imerco, INM, Isobro, J.C. Pengeskabe A/S, JPM Hofmann, Juul & Svane ApS, KBM ApS, Klavs Blomqvist Kleinsmedie, Koldkjær A/S, Køkkenforretningen, Livskunsten, Lollands Træløst, Lotus Energi Center, Leo Pharma, Match-Maker A/S, MetroService A/S, Milibe ApS, Musik Bixen, Neglestudiet, Nørremarkens Bageri, PA Consulting Group, Pehrsons Skosalon, Personal Systems ApS, Presswire ApS, Procon Solution A/S, RengøringsCompagniet, Rex Blomster, Rosenquist Film og TV ApS, Sacher Consulting, Salon Viktoria, Sdr. Næså Autoværksted, Seasafe Shipconsult A/S, Semler Holding A/S, Skomani, Skrædderiet Gitte Hindsborg, SM Pulverlakering, Storebælt A/S, Sussi Mode, Svends Møbler og Tæpper A/S, Sylvest Autoforum, Else From (Dentist), TBM Fredericia, TDC, Telit Tele ApS, Topdanmark Forsikring, Torvets Bageri, Totalkontoret ApS, Uniqcare, Vejle Rejser, Video 4, Vækst A/S, Aarhus Løve Apotek.

SPECIAL THANKS TO

Zonta, Søstre Grene, Bettina Aller, Tine Harden, Michael Yde Katballe, PA-Consulting, Toyota, Metro Service, Sund og Bælt, RengøringsCompagniet, First Hotels.

THANK YOU FOR SUPPORT AND CONTRIBUTIONS IN 2007

CARE Danmark thanks the following foundations, enterprises, institutions, private individuals and others for cooperation and support in 2007

CARE DANMARK'S STORYTELLERS

Vigga Bro, Søren Haslund-Christensen, Hans Georg Møller, Flemming Pless, Maria Stenz, Marianne Kemp, Maria Ploug Pedersen, Michala Tarbo Andersson, Signe Marie Cold-Ravnkilde, Anna Cecilie Varnild, Trine Mortensen Didriksen, Eva Larsen, Mia Lund Sørensen, Margharita Lundkvist-Houndoumadi, Janne Lykke Facius, Mia Lund Sørensen.

PROJECT COMMITTEE

The Committee works on general project-related issues and provides advice to the Supervisory Board and the secretariat. Svend Kaare Jensen (Chairman) - Managing Partner Jannik Boesen - Research Manager, Danish Institute for International Studies Jens Dragsted - former Head of Institute and Vice Director Flemming Frandsen - former Pro-Rector Jan Hassing - Scientist, DHI-Institute for Water and Environment Hanne Hüberts - Consultant, Nordeco Marianne Wiben Jensen - Coordinator, Africa, IWGIA Karen Lauterbach - Ph.D., Candidate, International Development Studies Søren Lund - Associate Professor, Roskilde University Hans Pækjær - Chief Consultant, EDB Gruppen

THE SUPPORT ASSOCIATION

The Support Association helps CARE Danmark's secretariat promote popular support for the organisation. The board members of the Association provide advice and constructive criticism in connection with communication and marketing tasks and help creating contacts with businesses.

Andreas Hastrup (Chairman) - Landowner
Susanne Grubb (Deputy Chairman) - Translator
Sophie Vedel Dalgaard - Cand. comm.
Carl Gyllenhoff - Scriptwriter
Peter Buch Lorentzen - Regional Manager
Steen Uhrskov - Director
Jesper Steen Andersen (alternate) - Cand. Theol
Steen Frederiksen (alternate) - Director
Ellen Lindskov Plesner (alternate) - Primary School Teacher



CARE Danmark
Nørrebrogade 68B
2200 Copenhagen N
Tlf: +45 35 200 100
Fax: +45 35 368 878
E-Mail: care@care.dk
Printed: 2500

Editors::
Marie Sisse Brown
Line Gamrath Rasmussen
Lykke Fabricius Port
Jon Bøge Gehlert
Nhi Quyen Le
Niels Tofte, (Resp.)

Lay out and graphic production:
Emma Witkowski
Sutikamon Højrup
Jes Boesgaard Madsen
Cover Foto: Ami Vitale, Michael Yde Katball, Evelyn Hockstein

**MEMBERS OF CARE DANMARK'S
BOARD OF REPRESENTATIVES 2007**

Chairman

Søren Haslund-Christensen,
Former Lord Chamberlain

Deputy Chairman

Anette Markan Reenberg,
Professor

Collective members

Jens Bjerregaard Christensen, Chairman, Association of
Graduates (BSc and MSc) in Agricultural Science

Eva Maria Olhoff, Project Manager, Danish Women's
Society

Hanne Topp, Committee Chairman, Danish Agriculture

Lise Warren Pedersen, Representative, DGI Danske
Gymnastik & Idrætsforeninger

Klaus Bustrup, Director, Landbrugsraadet

Niels Dabelstein, Senior Advisor, Danish Society of En-
gineers

Annelise Bastholm, Chief Dentist, Tandlægerne Nye
Landsforening

Personal members

Stig Andersen, Director

Vagn Holck Andersen, Director

Dorthe Arnoldi, Director

Peter Augustinus, CEO

Jannik Boesen, Research Manager

Leo Bjørnskov, former Head of Department

Hendrik Boesgaard, Head of Division

Hans Henrik Brydensholdt, High Court Judge

Jens N. Christiansen, Director

Sofus Christiansen, Professor

Sophie Vedel Dalgaard, Cand. Comm

Frans Dolberg, Associate Professor

Charlotte Dyremose, MP, the Danish Conservative Party

Henning Dyremose, Chairman

Jørgen Egelund, Gallery owner

Søren Espersen, MP, Danish People's Party

Flemming Frandsen, former Pro-Rector

Lis M. Frederiksen, Head of Media and Information

Steen Frederiksen, Consulting Engineer

Jan O. Frøshaug, CEO

Anette Følsgaard

Martine Cardel Gertsen, Associate Professor

Steen Gade, MF, Danish Socialist People's Party

Susanne Grubb, Translator

Henrik Grüttner, Environmental Manager

Carl Gyllenhoff, Scriptwriter

Christian Gylstorff, Market Director

Søren Haslund-Christensen, former Lord Chamberlain

Jan Hassing, Scientist

Andreas Hastrup, Landowner

Hans Henningsen, Principal

Per Holten-Andersen, Rector

Hanne Hübertz, Consultant

Helge Israelsen, CEO

Aase Jensen, housewife

Hans Jørgen Jensen, former Director Gen-
eral

Svend Kaare Jensen, Consultant

Jørn Jespersen, Director

Karin Riis-Jørgensen, Member of European
Parliament, Danish Liberal Party

Ole M. Jung, Director

Pia Larsen, MP, Danish Liberal Party - (until
1st of December 2007)

Anne-Lise Klausen, former CEO

Henning Klestrup, Director

Lone Kühlmann, Journalist

Susanne Larsen, CEO

Henning Lehmann, Professor, dr.phil.

Peter Buch Lorentzen, Regional Manager

Christian Lund, Scientist and Professor

Rune Lund, MP, The Red-Green Alliance

Søren Lund, Associate Professor

Mogens Lykketoft, MP, The Danish Social
Democrats

Palle Marcus, Director

Henrik Secher Marcussen, Professor

Birgit Meister, Editor

Charlotte Münter, Director

Kjeld Møllgård, Professor, Dr. Med.

Bent Schmidt Nielsen, Rector

Christian S. Nissen, former Director General

Per Nørhaven, Director

Carsten Smith Olsen, Associate Professor

Knud Overø, Director

Orla Grøn Pedersen, Director

Bitten Petersen, housewife

J.C. Briand Petersen, State Forest Supervi-
sor

Per Pinstrup-Andersen, Professor

Michael Schultz Rasmussen, Chief Project
and R&D Manager

Mogens Munk Rasmussen, former Group CEO

Helle Munk Ravnborg, Senior Scientist

Anette Reenberg, Professor

Hans-Otto Sano, Head of Research Dep.

Gunhild Lange Skovgaard, Director, Chief
Doctor

Jørgen Stubgaard, Nature Guide

Karin Lis Svarre, Head of Information

Henrik Toft Jensen, Rector

Lars Toksvig, Forest Supervisor

Bodil Udsen, Actress

Steen Uhrskov, Director

Margrethe Vestager, MP, the Danish

Social-Liberal Party

Jens Vestgaard, Head of Department

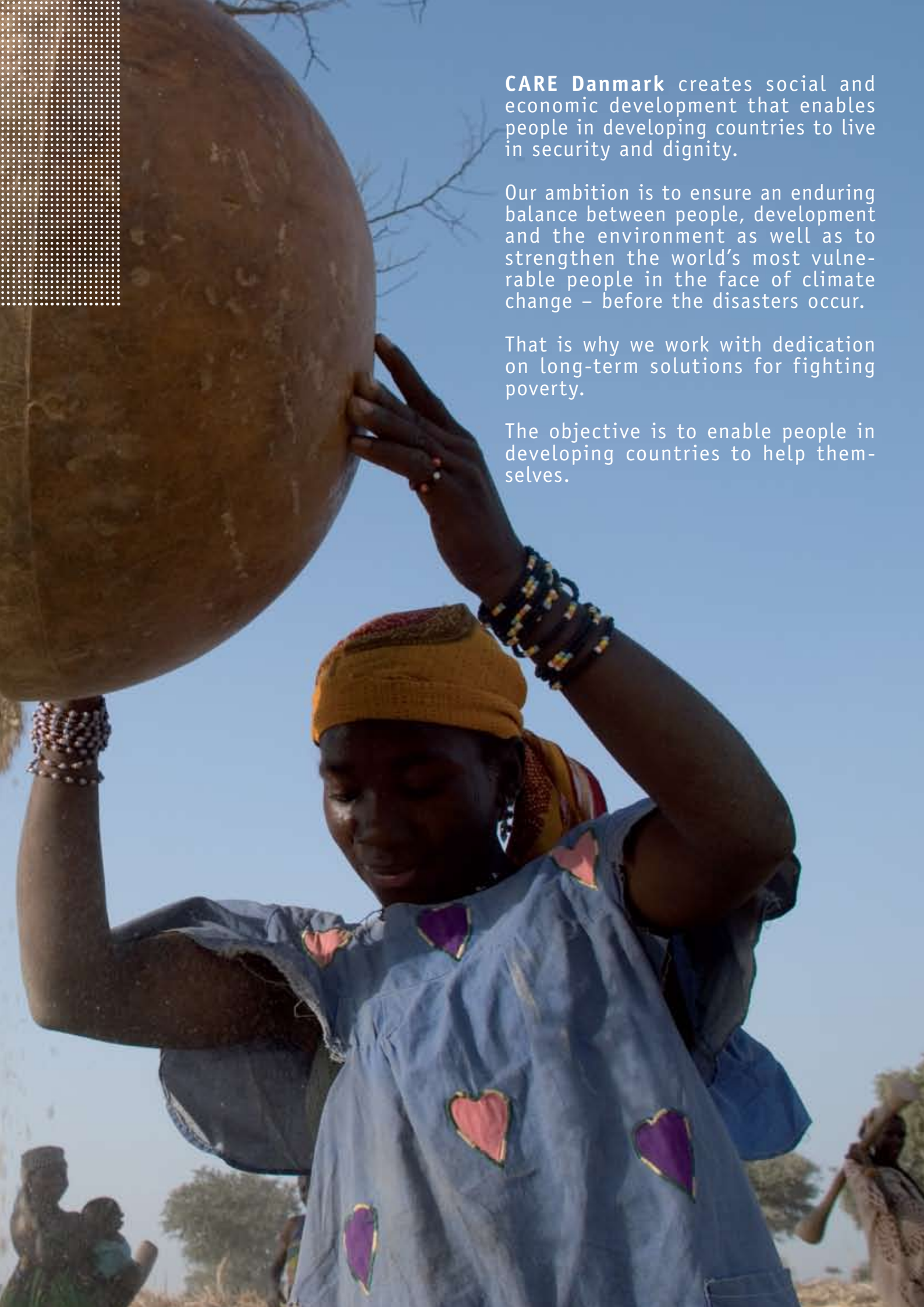
Anna Vinding, Head of Information

Nicolai Wammen, Mayor

Christian Wedell-Neergaard, Landowner

Metteli Würtz, Head of Division

Lars Øgaard, Director



CARE Denmark creates social and economic development that enables people in developing countries to live in security and dignity.

Our ambition is to ensure an enduring balance between people, development and the environment as well as to strengthen the world's most vulnerable people in the face of climate change – before the disasters occur.

That is why we work with dedication on long-term solutions for fighting poverty.

The objective is to enable people in developing countries to help themselves.



Photo: Tine Harden

CLIMATE CHANGE – THE WORLD'S POOR PEOPLE FEEL THE BITE

Hurricanes, cyclones, heavy rain and flooding ravaged several places on the planet during 2007. At the same time, the UN Panel on Climate Change concluded 20 years of debate on potential changes in climate: climate change IS happening, says the UN, and is created by the rich, industrialised world, but affects the poor people of the world the most.

Africa and Asia felt in a very concrete way in 2007 what it means when climate change begins to bite.

The monsoon was more violent than usual and led to massive flooding, especially in Vietnam, Bangladesh, Nepal and India. The rainy season kept Africa waiting, and when it finally came after a long period of drought, it flooded 22 countries across the continent.

And the weather forecast does not look any brighter – on the contrary. The UN Climate Panel states that global warming will lead to more extreme weather phenomena in the future.

The poor people of the world are disproportionately affected. They live directly off natural resources, and already have only little or no reserves. They are therefore extremely vulnerable when floods, hurricanes or droughts set in. This makes even greater the obligation of the rich industrialised world to find solutions to strengthen these people.

Thanks to our many years of experience and work in the field, CARE Denmark is in a unique position to enable the most vulnerable people to adapt better and survive in a more extreme climate. The year 2007 became the year in which CARE Denmark built the foundations of comprehensive climate adaptation projects in Niger, Ghana and Mozambique.

Climate change manifests in different ways in the affected regions. Through field research, CARE is working on finding and understanding the needs of each society individually.

It is important to know what the actual consequences of climate change are for specific villages. For instance, we must cooperate with the local population to prepare maps showing the most risky places for dwelling or growing crops. These maps will be an aid in adapting the agricultural sector to the changes. At the same time, we will have a basis for planning what to do when disaster strikes.

In 2007, CARE Denmark asked women from Niger and Ghana about their most imminent concerns. Floods, variations in rainfall that damage the harvest, and drought took an undisputed first place. All things related to climate.



Photo: Jørgen Schytte, Michael Yde Katballe, Charlotte Haslund Christensen

WHEN CLIMATE CHANGE OVERTAKES WOMEN

When water pours down from the sky, or the sun burns the crops off the land, the world's poorest women pay the highest price.

Seventy per cent of the world's 1.3 billion poor people are women. According to a report by the UN Development Programme, UNDP, climate change increases existing inequalities, and gender inequality is among the most persistent.

Structural barriers, such as not being allowed to leave their home unaccompanied, not only keep women poor, but also render them vulnerable in disaster situations.

But it is not only in times of disaster that women are more affected by the vagaries of nature. They are also more exposed to the insidious every-day effects of climate change. Global warming means that the tasks women do become still more difficult. Even longer distances have to be travelled to fetch water, food for the livestock and firewood. The work becomes more time-consuming as droughts spread. Fewer girls will have time to go to school, and fewer women will have time to earn money.

Therefore governments and international organisations must realise that we cannot come up with a 'one-size-fits-all' solution when we prepare climate adaptation strategies.

On the contrary, we have to target our climate work on women and their special needs.

In an attempt to identify and analyse how problems and the affected groups of people are to be prioritised, CARE has developed a 'Climate Vulnerability and Capacity Assessment Tool', which makes it possible to identify particularly vulnerable regions and replace livestock and crops with breeds and varieties that are able to survive extreme weather. However, this solution is merely a step in the right direction. It needs to be followed up by long-term efforts which may in time change the deeply embedded economic inequalities and discrimination.

'A tsunami is coming. But they do not know it because they are not warned. And even if they knew, they are not allowed to leave their homes unaccompanied. Most fatal, though, is the fact that they cannot swim. This was the reality for Indonesian women during the tsunami disaster in 2005, and this is still the reality in many African countries. A tragedy which will repeat itself as global climate change sets in.'

-Andreas Antoni Lund, Trainee Reporter attached to CARE Denmark: Politiken, 5 November 2007.

WHERE WE WORK

04 GHANA

ANR

The ANR programme aims at alleviating poverty in rural areas and forest districts in Ghana. It works towards ensuring increased respect for the rights of poor farmers, through education and dialogue with the authorities.

The programme also supports immediate improvements in the livelihoods of poor families.

FOREST

This project focuses on securing poor people's access to land and forest resources, and on strengthening dialogue with forest authorities to ensure that the rights of farmers are respected and the forest is protected. The project supports integrated agriculture which can co-exist with the forest.

FASE

This project teaches the poor local community new ways of cultivating the land which will increase yields and make the community less vulnerable to food shortages. In the semi-dry northern districts of the country, cattle and other domestic animals constitute both a source of income and a 'life insurance'.

SLATE

This project works for a more just administration and distribution of land in Ghana to ensure access to land for poor farmers. The project cooperates with the traditional authorities – the chiefs – to work out better solutions to land shortages. Farmers who have used the land for many years are issued with a land use rights certificate.

CODIS

This project works on reforming the traditional authorities in Ghana, which include chiefs, the 'queen mothers', and youth and women's organisations. They are given training in how to contribute to the development of their local areas through organising groups and mobilising the local community to take ownership of its own development.

CARE Danmark works in eight countries in Africa and Asia, with targeted programmes focusing on poverty reduction and natural resource management.

NIGER

PROGRES

CARE Danmark's general programme in Niger improves the living conditions of nomads, women and other marginalised groups by focusing on the causes of extreme poverty, such as poor governance, scarce natural resources and weak civil society.

CHILDREN OF THE DESERT

This project ensures access to primary school education for 1,800 girls and boys through the establishment of 16 village schools. The project also offers reading and writing classes for parents, and strengthens local organisations.

APCAN

This project aims at strengthening the national food security monitoring system to ensure that local crisis indicators, such as malnutrition rates, increasing cereal prices, and conflicts over natural resources, are registered at national level. This system has been established to ensure that local institutions react to prevent returning famines.

WELLS OF PEACE

Water is scarce in Niger, and this increases ethnically motivated tensions around wells. The Wells of Peace project organises dialogues between user groups and seeks to establish common rules which ensure fair and equal access to water for everybody.

PARDESA

This project improves food security in Niger by giving inhabitants access to various sources of income. Through micro-finance groups, cereal banks and animal husbandry, the project improves people's ability to manage on their own through difficult periods.

MOZAMBIQUE

CHAPPLE

This project supports AIDS orphans. Discrimination and ostracism are combated through campaigns in the villages. The project also arranges for birth certificates for the children, which ensure them access to schools and public support.

GOVURO

This project was completed in 2007, having provided drinking water for over 5,500 people in the poor province of Inhambane. In addition, special women's groups were trained in giving hygiene advice to others.

COCISO

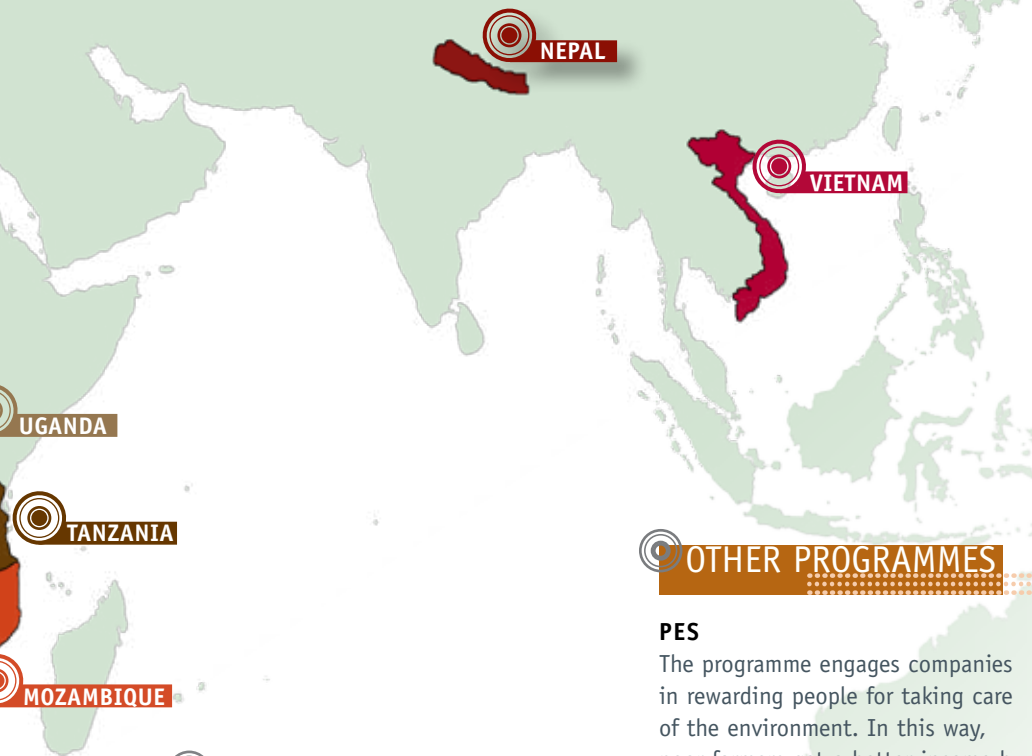
This project helps prevent HIV/AIDS among excluded orphans, and gives them better access to care and support from the local communities. The community-based organisations are supported in activities for the benefit of the orphans and the adults looking after them. The orphans are given the opportunity to go to school and assistance in growing their own vegetables.

CARE INTERNATIONAL

CARE Denmark is part of the international association of CARE organisations, which is one of the largest humanitarian organisations in the world. CARE International, as the association of 12 independent CARE organisations is called, implements sustainable development projects and emergency relief in more than 70 countries, benefiting 45 million poor people all over the world. The majority of the 13,000 staff members employed by CARE International are

of local or regional origin. By working with people who speak the local language and have knowledge of the area and the local conditions, CARE is able to build trust and ensure continuity.

The members of CARE International are: CARE in Australia, Austria, Canada, Denmark, France, Germany, Japan, the Netherlands, Norway, Thailand, the UK and the USA.



NEPAL

VIETNAM

UGANDA

TANZANIA

MOZAMBIQUE

UGANDA & EAST AFRICA

REPA

This programme works with the poor and marginalised ethnic minorities, like the Batwa community in south-western Uganda. The programme primarily supports them with micro-finance schemes, access to resources in national parks, and building the local community.

EMPAFORM

This programme covering Tanzania, Uganda and Kenya trains community-based organisations in forest legislation and in helping the community with establishing forest use agreements with the authorities.

LIVING

This project in Tanzania aims at improving economic conditions for poor communities by strengthening representative village organisations in managing natural resources and economic development.

OTHER PROGRAMMES

PES

The programme engages companies in rewarding people for taking care of the environment. In this way, poor farmers get a better income by looking after the forest, the government gets an improved environment, and the companies get natural resources of higher quality available for their production.

VIETNAM

CASI

This programme is aimed at strengthening Vietnamese community participation in and influence on poverty alleviation in rural areas, with particular focus on the communities' relation to and management of the environment.

PACODE

The objective of this programme is to improve the living conditions of poor Khmer communities in the Mekong Delta. The programme concentrates on increasing their income, improving access to water and sanitation, and promoting sustainable use of natural resources.

NEPAL

DOTI

The purpose of this project is poverty alleviation in one of Nepal's poorest regions. The target group is about 12,000 Dalits, women and land-poor farmers. Local civil society organisations and leaders are also trained in building the local community.

JIWAN

The JIWAN alliance programme works with general education on the use and conservation of natural resources, through the 'Open Village Schools'. In these schools, people from different castes – both men and women – meet to discuss health, rights, life in the village, and natural resources.

JANSEEP

This project is aimed at reducing poverty among the most marginalised ethnic minorities in Nepal by improving their livelihoods, strengthening their organisational capacity, and raising awareness of their rights.

CHULI

This programme focuses on natural resource management, capacity building, democracy, good governance and formal education support, in cooperation with local organisations and authorities. CHULI aims to improve the livelihood security of poor, vulnerable and socially excluded people. CHULI links up CARE Denmark's activities in Nepal and thereby creates synergies among the different programmes.

06 COUNTRY PROGRAMMES

MOZAMBIQUE

- unfavourable odds from birth

One and a half million Mozambicans are living with AIDS. Five hundred new cases are registered every day. Forty-five per cent of all newly infected victims are young girls under the age of 24.

Merely cheap labour

Discrimination against girls and women is common in Mozambique. Almost 50 per cent of girls between the ages of 10 and 14 do not go to school, whereas for boys it is only one out of twenty who does not get this opportunity. Girls are normally regarded as cheap labour, and they have a lower status than boys. Their chance of getting influence is small, and violence against women is widespread.

At the same time, girls and women have fewer opportunities for earning an income. Very often they are driven to prostitution, which exposes them to HIV infection.

Treatment and mental support

When their parents die of AIDS, girls are left with the responsibility for their siblings and the household. The two CARE HIV/AIDS projects in Mozambique attempt to relieve the pressure on girls and others who look after orphans. The CHAPPLE programme works to ensure that orphans maintain a positive lifestyle despite their severe disease, supports them in attending school and ensures they get the right medical treatment: all the things that their parents were supposed to be taking care of.

Photo: Christina Jensen

It is not just climate change that affects women more. When it comes to HIV/AIDS, young girls in Mozambique are at higher risk of infection. Not only that, but it is they who must bear the burdens when the deadly disease claims the lives of their parents

In 2007, CARE supported birth registration for more than 15,000 children and poverty registration for 3,000 children. Registration means that the children get the opportunity to go to school and receive public support.

CARE also takes HIV/AIDS into consideration in other programmes, through guidelines for the infected and information campaigns for both young people and adults. In 2007, CARE reached more

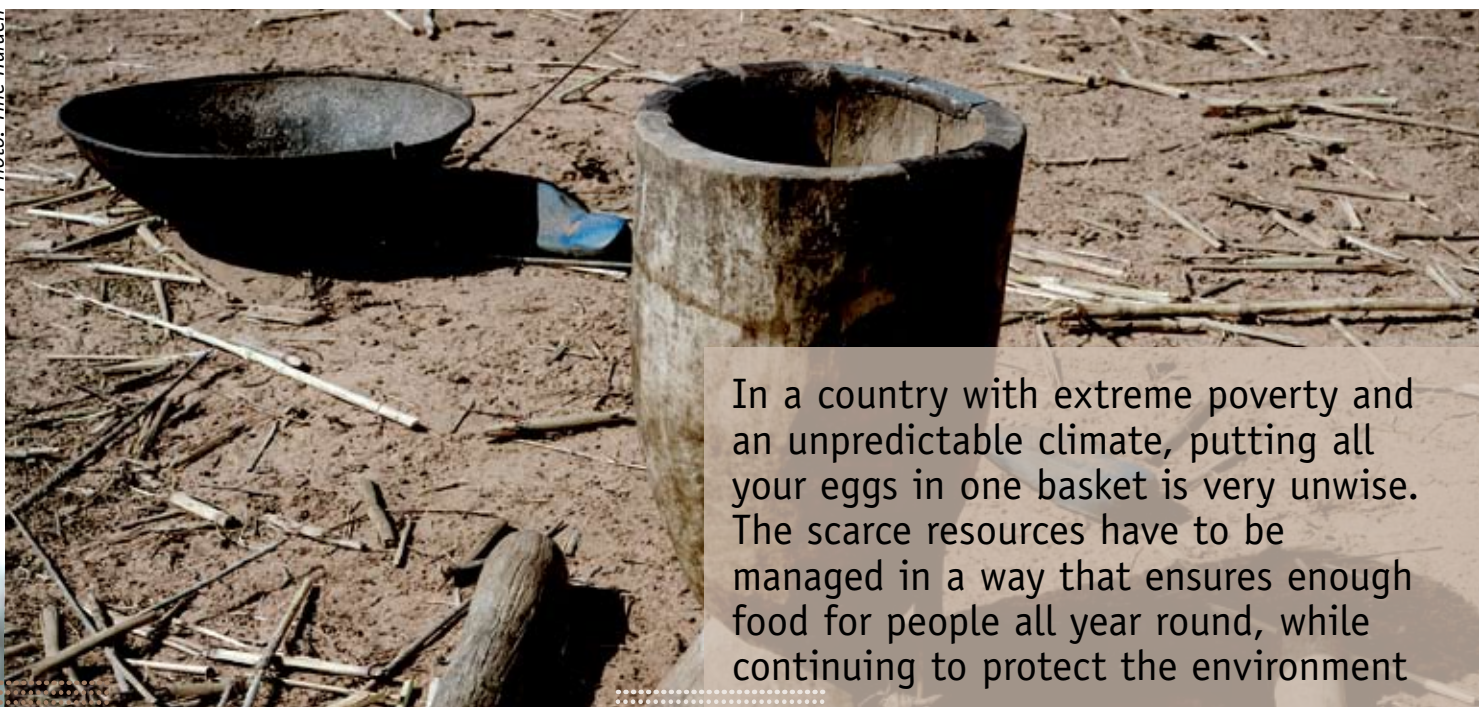
than 12,000 people with its campaigns for prevention of HIV infection and discrimination against HIV-positive people.

CHAPPLE: Child AIDS prevention and positive living and empowerment for orphans and vulnerable children.

NIGER

- preventing hunger is possible

Photo: Tine Harden



In a country with extreme poverty and an unpredictable climate, putting all your eggs in one basket is very unwise. The scarce resources have to be managed in a way that ensures enough food for people all year round, while continuing to protect the environment

Famine is not a new phenomenon in a desert country like Niger – one of the poorest countries in the world. The climate is characterised by long periods of drought, and the people suffer chronic food shortages because the level of agricultural production is insufficient.

The population applies various traditional strategies to survive in hard times, but some of these strategies are very short-term and unsustainable. Examples include over-intensive cultivation of the soil, cutting down trees and bushes for selling, and raising a loan against next year's harvest. As a result, the soil becomes degraded and impoverished, production rates drop, or the family gets into debt. Through the PARDESA programme, CARE works on improving livelihoods for families by seeking alternatives such as cereal banks and

by helping families not to rely on only one survival strategy.

Securing the existence of the village with cereal banks

Cereal banks are a way of providing a more stable access to foodstuffs. They ensure that poor farmers can buy grain for a fair price during the hungry period when the families' own production has been used up and grain is expensive on the market because of limited supply.

The cereal banks buy grain relatively cheaply just after the harvest, when prices are low. When the families' grain stocks are depleted and grain prices on the market increase, the farmers can buy grain from the banks at a price that is considerably lower than the market price.

In the Dakoro province of southern Niger, CARE Danmark has constructed 35 cereal banks. Fifteen of these were

built in 2007 as part of the PROGRES programme. Around 800 people benefit from each cereal bank.

In the first year, members of the cereal banks receive training in administration principles, and gradually the banks become self-financed and self-managed.

The banks are often divided into two sections – one for men and one for women, in order to promote women's participation in decision-making regarding foodstuffs.

PARDESA: Partnership for decentralization and sustainable food security.

PROGRES: Programme for sustainable management of natural resources and strengthening of civil society.

08 UGANDA - Batwa people on the edge of the rain forest

It is definitely a commendable initiative when developing countries set up national parks to preserve their forests. But in Uganda, the indigenous communities in the forests have paid a high price. They lost their livelihoods and are now struggling hard every day to survive. The children in particular often have to give up this fight



Photo: Jacob Holdt

The national parks in south-western Uganda have saved mountain gorillas and preserved threatened plant species. But they have been disastrous for the Pygmy community – the Batwas – who used to live in and off the forest. Today, the landless Batwa people live on the edge of the rain forest, constantly on the run from new forest clearance and with a number of serious diseases as their only luggage. An abundance of mosquitoes and a moist climate make ideal conditions for malaria to spread, and when the winter sets in, the Batwa people's temporary huts made of leaves provide little protection against the cold.

In 2007, CARE Danmark realised the severity of the situation for the Batwa children in Uganda, and a three-year programme was initiated in January 2008

aimed at reducing child mortality among the landless Batwa community from 59 to 29 per cent. The programme is being financed by Denmark's National Collection 2008 – Danmarks Indsamling – and the vital ingredients are access to clean water and sanitation, medical treatment and mosquito nets.

Right to natural resources

Like other CARE projects in Uganda, the programme is aimed at protecting the rights of poor people when their government decides to establish a national park for the purpose of nature conservation. In the fourth year of the REPA programme, the focus is on securing local communities' rights to use natural resources.

The target group is 15,000 people living as neighbours to protected areas,

in particular ethnic minorities, women, landless people and young people. Last year, the programme's results were widely met with satisfaction. Particularly successful were the 'village-based trainers'.

CARE trains people from the villages in agricultural skills, and seeks to help suppressed minorities regain their pride through role-playing. When the trainers return to their homes in the village, they function as positive role-models and pass on their newly acquired knowledge.

In this way, all the villagers benefit from the training and are made aware of the fact that their ethnic group has the same right to land as the rest of the Ugandan population.

REPA: Rights, equity and protected areas.

GHANA

- climatic threats to food security

The West African country of Ghana had to wait a long time for the rainy season last year. When the rains finally came in August, the massive amounts of water on the bone-dry land drowned the livelihoods of thousands of people. This year's weather forecast does not look brighter for Ghana, so advance measures are necessary. CARE has already trained farmers in anticipating disasters

One-third of a year's rainfall in three days. Uneatable foodstuffs, rotten crops and houses washed away. Two hundred and fifty thousand Ghanaians affected. This was the situation in the northern and poorest part of Ghana in late August, when several months of drought gave way to the most severe floods the country had seen in many years. Before the heavy rain began to fall, the usual drought threatened the harvest. The drought spoiled between 60 and 80 per cent of the crops. Farmers had to move their crops to river banks and the moister valleys. But the floods following the drought washed the crops away and left the newly

established fields under water. These fields were intended to secure food for another 'hungry' period of droughts from October to April.

Know your disaster before it hits

As the climate is becoming more and more unpredictable, preparedness is vital for poor farmers. In 2003, CARE initiated the FASE project, which develops and improves technical assistance to poor farmers. The project performed really well in 2007, ensuring that the sheds for domestic animals were improved so that no animal in the western district of Timpela Maprusi died as a consequence of buildings collapsing.

The small society could therefore continue raising goats, sheep and gui-

nea fowls and achieved good yields – both in terms of quantity and quality. Other places in Ghana also benefit from CARE's support.

Land rights

The ANR programme, which aims at securing access to land and natural resources for farmers, saw considerable progress in 2007. CARE placed an increased focus on women's limited access to land, and the issue of land rights now occupies a prominent place in the implementation of the programme.

FASE: Sustainable farming systems.

ANR: Agricultural and natural resources.



Photo: Tine Harden

Nepal - understanding creates development

10

Photo: Jørgen Schytte



With elections set for November, the future seemed bright for the Nepalese people. But the elections were postponed until April, and ethnic unrest spread in the southern parts of the country. The JIWAN alliance programme works towards curbing ethnic tensions and giving the untouchables their legitimate voice. The means to achieve this is the Open Village Schools - Lok Pathshala

Photo: Janni Thuesen



JIWAN means 'life' in Nepalese. Lok Pathshala means Open Village School. Together, they will break the traditional distinction between poor and less poor castes, as well as between women and men.

The poorest people in Nepal have to fight for their survival. They constitute the lowest step of a class-cleft society where women and the untouchables (Dalits) are denied their rights. The JIWAN programme aims at ensuring the rights of the people in Churia and Terai, to the south-east of Kathmandu. At start-up in February 2006, people were sceptical of the benefits of discussing society and religion in this forum, but during 2007 the programme gained broad support from all castes.

Economic and social progress

The Open Village Schools are operating in 33 Nepalese villages. The Open Village

Schools teach the communities how to use natural resources in a sustainable manner and foster mutual understanding. There was great progress with this in 2007. In the schools, participants leave their gender, caste, religion and social status at the door and discuss their society, rights and development issues. A tangible result is that women have removed their traditional veils and even dare to engage in discussions on an equal footing with men.

The way the schools are organised has also taught the communities how to solve different tasks together. For instance, they have reconstructed a collapsed bridge together, set up toilets at a health clinic, and ensured the school attendance of poor children.

Political unrest slows down implementation

Positive developments during the first

phase of the JIWAN programme have, however, met resistance when the tense political situation led to assaults on poor people. CARE's continued efforts are therefore more pertinent than ever.

In 2007, CARE expanded its activities in Nepal with the JANSEEP project, which focuses on securing basic livelihoods for the marginalised Janajati people. The indigenous Janajatis have their own language, traditions and tales, and they make up more than one-third of the 27 million inhabitants of Nepal.

JIWAN: Jaladh integrated watershed and natural resources management programme.

JANSEEP: Janajatis social and economic empowerment project.

Vietnam - women's fight against inequality

Photo: Jørgen Schytte



Vietnam has experienced rapid economic growth in recent years, but not all Vietnamese have benefited from this positive development. About one-third of the population still lives below the poverty line in rural and mountainous areas. In southern Vietnam, the Khmer ethnic minority is particularly affected, and for the women inequality is multi-layered

CARE Danmark's programme PACODE, which runs until 2009, aims at fundamental improvements in the lives of Khmer families, for example by improving their access to clean water and sanitation, and by establishing Women's Development Groups where women are made aware of their rights. This approach has proved to be very effective in the last year.

Toilets and education

Good sanitation can be a step in the right direction towards education and economic development. The connection between these two things is not immediately obvious, but in 2007 considerable progress within these fields was made in Vietnam. By installing toilets and washing facilities in schools, CARE found that it was easier to get young village girls to stay at school, because few of them have these facilities at home.

The longer the girls remain in the educational system, the longer it is before they get married and become full-time housewives. This confirms the fact that education is the way to development.

Experience shows that Vietnamese women spend their money rationally and with long-term benefits in mind. The profits they make go directly to the family, and not least to the education of their children. Improving practical facilities in the villages can

therefore have a remarkably positive influence on development.

A platform for knowledge and discussion

Another basic element in CARE's programmes is the establishment of Women's Development Groups where women meet, discuss their rights, and tell each other about their own experiences. Rights in this connection mean something as basic as the right to give birth only to the number of children that you are able to raise. Moreover, a network of voluntary health facilitators teaches the women about prevention and treatment of common health problems such as diarrhoea.

The programme is implemented through local organisations, among these the local association for women, the Women's Union. The intention is to apply experience gained from this programme to other areas inhabited by the Khmer people to combat poverty and improve the status of women in Vietnamese society.

PACODE: *Participatory community development in An Giang and Soc Trang.*

THE SOCIAL BIAS OF CLIMATE CHANGE

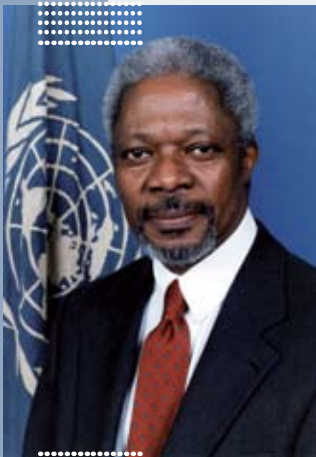
Climate change is already happening, and the world's poorest people are disproportionately affected. Accordingly, CARE has launched the 'Poverty & Climate Change Initiative', which is aimed at influencing governments and the general public around the globe to take climate change seriously, and which is to set a new course for the work of the organisation.

The initiative focuses on ensuring that development work to an increasing extent averts the consequences of climate-induced natural disasters, such as flooding and soil erosion. It is also intended to contribute to greater significance being attached to the role of poor people in relation to nature conservation and disaster prevention in international development work.

CARE Danmark is leading the climate work within CARE International, and accordingly has employed an international Climate Coordinator to manage the initiative from Nairobi.

See www.careclimatechange.org

'While all countries are vulnerable to the consequences of climate change, developing countries are especially at risk. Their economies will suffer most from the heightened frequency of extreme droughts, floods and storms associated with climate change. There is a real risk that climate change could undermine human development.'



- Kofi Annan,
former UN Secretary-General

Photo: www.library.thinkquest.org



Photo: Michael Yde Katballe

Africa and Asia are weltering in unmet needs. Need for food. Need for medicine. Need for education. Need for equality. Need for housing. Need for sustainable development. But the people of Africa and Asia have something apart from needs. They have rights.

'All human beings are born free and equal in dignity and rights.'

This is the wording of the first Article of the 1948 Universal Declaration of Human Rights. Quite simple in wording, but terribly complex in implementation. Non-compliance with the Declaration primarily happens in the countries in which adherence to it is most needed – where circumstances such as a harsh climate, corrupt regimes and aggressive epidemics present a demanding agenda. In the Western world, there is broad consensus that the more fortunate societies should help the poor. This is sympathetic and to



Photo: Jørgen Schytte

RIGHTS BEFORE NEEDS

a certain extent correct. Charity is morally defensible and effective in its own way, but the needs of developing countries cannot be fulfilled by charity alone.

When you talk about needs alone, the responsibility for meeting them is not placed. Rights, on the other hand, go hand in hand with obligations. You cannot talk about rights without also defining who has the obligation to respect them or fulfil them. Apart from this, rights are directly linked to objective minimum standards – the international human rights conventions, which most countries in the world have ratified. The conventions set a minimum level for how states should treat their citizens and for the possibilities and services that they should offer.

You cannot measure needs in such tangible terms. Accordingly, it makes sense to handle needs as rights.

Focus on rights

The fight for rights is spread over several

project countries. With the JIWAN alliance programme in Nepal, the Open Village Schools give the outcaste Dalits a vote, gather inhabitants across class boundaries, and teach them about society, education, and other matters.

In the northern, poor parts of Ghana, the ANR programme works to improve farmers' rights to land and natural resources, in law and in practice, so that the international lumber corporations do not succeed in exploiting the forest. Project Desert Children in Niger constructs village schools and works to ensure the rights and access of girls and boys to education, as more knowledge is the currency of the future generation in one of the world's absolutely poorest countries.

These are all examples of projects that address very basic necessities to which the population is entitled, and that make the population active participants instead of passive recipients of development.

The Batwa ethnic group provides

another example of the necessity of focusing on rights. The Batwas live in the forests of Uganda and fight for the land that they lost when the Ugandan government created protected areas and national parks, preventing them from living off the natural resources as they used to. But the Batwas have no other means of surviving. CARE supports the Batwas and fights for their cause, because they have a right to land and to the possibility of managing on their own. Being part of a large, international organisation, CARE Danmark is able to help small population groups put pressure on states that do not meet their obligations towards the population.

The most basic human right is the right to live a life in equality, dignity and security – also if you are poor. Therefore, rights-based approaches and strengthening people's ability to help themselves constitute the foundations of CARE Danmark's programmes to combat poverty.



Photo: Tine Harden

STRONG SUPPORT FOR CARE DANMARK'S WORK

In recent years, CARE Denmark has succeeded in increasing the number of its contributors and members. In 2007, more than 22,000 private individuals along with a number of companies and foundations contributed a total of DKK 17,072,000 to CARE Denmark's work. This is the highest level of private contributions in the life of CARE Denmark.

CARE Denmark's Support Association finds that there is great interest in membership of CARE Denmark. By the end of the year, the Association had achieved 8,093 members, the highest number since it was established in 1987.

SUPPORT FROM COMPANIES AND FOUNDATIONS

Through the year, CARE Danmark saw increasing interest from companies and foundations wishing to support our work. This interest has been expressed partly through direct contributions to CARE Danmark's work and partly through sponsorships, events and partnerships. Substantial contributions were made by the Novo Nordisk Foundation, for instance.

In 2007, CARE Danmark launched a new concept aimed at Danish companies. The concept enables companies to support a good cause as a corporate partner. A corporate partnership provides access to various services from CARE Danmark, including, for example, opportunities to support substantial projects in Africa and Asia and to follow project developments on a regular basis. Another example is the opportunity to support the establishment of cereal banks in Niger. These ensure that poor farmers can buy grain at a reasonable price in the period when their own stock is depleted. In 2007, Metro Service, Sund & Bælt and RengøringsCompagniet decided to support the construction of cereal banks in Niger.



Photo: CARE Danmark



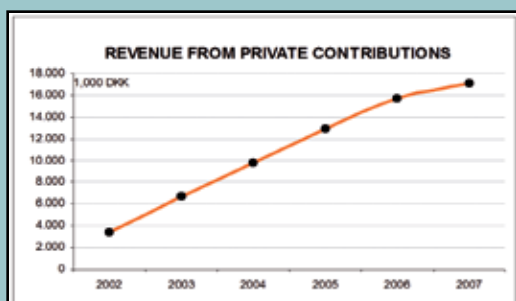
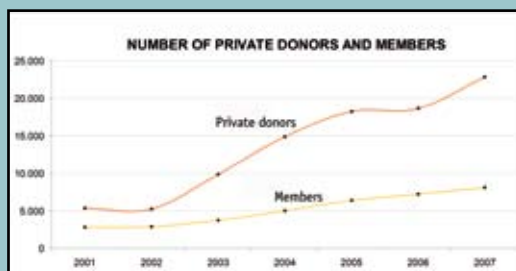
Photo: Chistina Jensen

CALL CENTER – A NEW COLLECTION METHOD

CARE Danmark has managed to maintain the level of private contributions in relation to contributors and members. The greatest success has been achieved by generating increased contributions from existing contributors and members, the 'loyalty campaigns'.

During 2007, market and legislative changes have made conventional fundraising methods, including street recruitment, or 'face2face', as it is called, more or less impossible. Face2face was the prime mover for the growth in the number of contributors over the past four or five years. The consequence of this has been that CARE Danmark has changed its former fundraising methods in the direction of more telemarketing activities, and for this purpose has established its own call centre. The establishment of our own call centre means that we can create results among new as well as existing members in a fast and flexible way by strengthening loyalty and upgrading existing agreements.

CARE Danmark's telemarketing corps has a strong commitment to the organisation and renders good service that strengthens loyalty from our regular supporters and other stakeholders.



THE PRESS AND OWN MEDIA

In 2007, CARE Danmark enjoyed broad coverage in daily, regional, local and weekly newspapers as well as in magazines, professional journals and electronic media. The coverage was focused on CARE Danmark's work against poverty in developing countries, our unique expertise, especially in connection with the effects of climate change on the world's poorest people, and our fundraising work.

CARE Danmark's programme coordinators were used on several occasions as expert sources in national newspapers and on radio and TV. On the occasion of the annual national collection, globetrotter Bettina Aller and photographer Tine Harden went to Ghana. The purpose was to draw attention to the living conditions of African women. The trip resulted in several articles and a large and fully sold-out information event arranged by PolitikenPlus. There were also a number of visits from Danish reporters to CARE Danmark's projects in Vietnam, Ghana, Nepal and Niger.

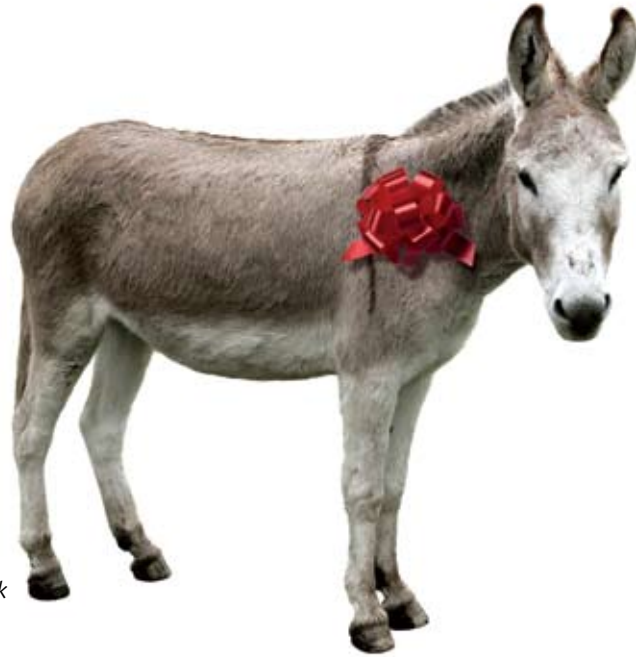
Finally, in connection with the gift concept, CARE Danmark succeeded in raising a broad debate in the Danish media about the effects of aid in the form of gifts, which made room for spreading knowledge not only of the gift concept, but also of CARE Danmark's work and expertise.

In addition, CARE Danmark published a couple of films, e.g. on YouTube.

Four issues of the members' magazine, CARE NEWS, were published in 2007. The magazine keeps members, contributors and other stakeholders up to date on the development and results of CARE Danmark's work, and puts our action areas into a topical perspective. In addition, each month approximately 9,000 persons received E-News, the electronic newsletter with news and stories from CARE Danmark's programme countries. The website www.care.dk had more than 65,000 unique hits in 2007.



Photo: Tine Harden



www.caregaver.dk

CARE GIFTS

CARE Denmark ventured for the first time into the Christmas market through the internet shop, www.caregaver.dk, selling donkeys, guinea fowls, buffalos, grasscutters, water filters, vegetable gardens and school and micro-finance kits – all for the benefit of the poor people of the world. CARE Denmark was far from the only organisation in the market, and competition among the organisations was fierce. Accordingly, we are satisfied with the almost one million kroner raised by the gifts. A total of more than 4,500 gifts were sold. The gifts are followed up by electronic newsletters to the customers that have signed up – and the interest in hearing about the difference the gifts make has been great. All gifts have been integrated into our existing programmes on the basis of our many years of experience in the field. For CARE Denmark, this means that we have been given a unique opportunity to tell about our long-term work.

The cooperation with Danish companies has also been positively influenced by CARE gifts. PA Consulting made their services available in connection with the concept development of www.caregaver.dk. Søstre Grene and the Zonta network were again strong supporters in terms of sales. Aller Group CEO Bettina Aller became CARE Denmark 'ambassador', and went on national TV just before Christmas to tell Danes about CARE Denmark's work and the gifts that are guaranteed not to be exchanged.



Photo: CARE Danmark



Photo: CARE Danmark



Photo: Toyota

NATIONAL COLLECTION

Under the theme 'Support Women in Africa', CARE Denmark, in cooperation with the development organisation Ibis, carried out a national collection for the second year in succession on Mothers' Day, which in 2007 fell on 13 May.

The Danes strongly supported the idea of inviting African women to Mothers Day. Approximately 1,600 collectors went from door to door and were met with good will and cash support in all of Denmark's major towns and cities.

The national collection was achieved largely thanks to the work of all the volunteers and in particular the energetic coordinators. Despite the successful collection, it took many resources for CARE Denmark and Ibis to get this far – to an extent that we have decided not to continue with joint national collections in the coming years.

LOTTERY

In the period from April to June, CARE Denmark's lottery took place.

Again, support for poor women was the focus. A total of 20,000 lottery tickets were sold – a result that it was only possible to achieve through the support and great commitment of our sales partners, Søstre Grene and the businesswomen of the Zonta network.

This was the second time that Zonta supported the lottery effort, and on 25 April 2007 the network was awarded the CARE Denmark Award 2006 for its great support to CARE Denmark's work. The CARE Denmark Award is a 'challenge award', which is conferred each year on a partner who has made a special effort. In 2007, the lottery had valuable support from the many companies that decided to sponsor the wonderful prizes, including DanCenter, Amokka, PUMA, Microsoft, Stormagasinet.dk, Zepto, Apollo Rejser, MyTravel, Egekilde/Royal Unibrew A/S, and Hetland Nordic. The lottery also formed the basis of a new partnership with TOYOTA Denmark, which sponsored the first prize: a Toyota Aygo.

FINANCIAL REVIEW

PROJECTS AND PROGRAMMES

CARE Denmark is a private and independent aid organisation working in a performance-oriented way to fight poverty and to improve the standard of living of the population in developing countries.

CARE Denmark is part of an international association of CARE organisations, CARE International, which together constitute one of the largest humanitarian organisations of the world.

The most important part of CARE Denmark's income consists of funds designated for international projects and programmes against poverty in the third world. In 2007, income of this type amounted to a total of DKK 65.5 million, of which DKK 50 million came from Danida, DKK 12 million from the European Union (EU), and DKK 3.5 million from private donations.

In 2007, another EU-financed project received grant approval and was initiated in Vietnam with the purpose of supporting poor farmers in marketing agricultural products at national and regional levels. For the first time, CARE Denmark obtained approval for two new Danida individual projects in Uganda and Mozambique, respectively. The projects are negotiated with and managed by the respective Danish embassies. The agreement with the Environmental Office of the Foreign Ministry on 'Payment for Environmental Services' was extended for another four years.

The great annual fundraising day in the Danish upper secondary schools, 'Operation Day's Work', selected a CARE Denmark project as its cause for 2008.

FUNDRAISING ACTIVITIES

With the objective of being able to reach even more recipients in cooperating countries, CARE Denmark initiated a long-term fundraising strategy in 2003. This strategy has resulted in a very substantial increase in fundraising activities, but has also led to increased expenses as well as higher income from private contributors. As in previous years, the strategy was again very successful in 2007. Through recruitment activities, CARE Denmark increased its total number of contributors from 5,255 in 2002 to 22,876 by the end of 2007. In 2007, we succeeded in achieving a satisfactory relationship between investment and income, so that the private contributions and gifts during the year have increased the contribution to CARE Denmark's work on improving standards of living for people in the world's poorest countries.

It is still the Management of CARE Denmark's opinion that the fundraising strategy is correct and necessary – also in the light of the match requirements, which for 2007 represent 10 per cent of CARE Denmark's framework grant from Danida. There are also match requirements for projects that receive grants from the EU. The large investments in the fundraising area have resulted in net assets in the investment period being lower than desirable.

FINANCIAL PERFORMANCE

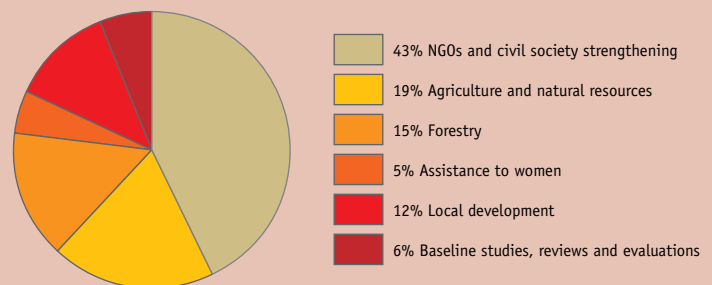
The closing financial statements for the financial year 2007 show a surplus of DKK 934,000, and at 31 December 2007, net assets stood at DKK 3,704,000. The surplus for the year is satisfactory in relation to CARE Denmark's long-term objectives and strategies for expansion and increase of its activities in cooperating countries. On this basis, the year's continued high investment in collection activities has been necessary.

The Management of CARE Denmark assesses the investment to be financially sound, as well as necessary in the long term. It is important to mention that in 2007 we again succeeded in making progress in private contributions and gifts to CARE Denmark's work, as well as meeting the expectations for progress in number of contributors. Thereby, the necessary basis for further growth in coming years has been created.

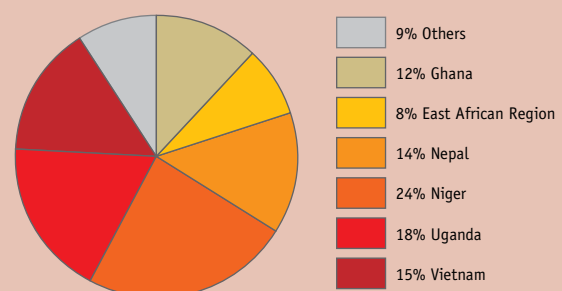
CARE Denmark expects the positive trend in private contributions to continue, with an expected surplus of approximately DKK 0.9 million for consolidation of net assets. At the same time, further growth in public grants is expected. The Danish parliament, the Folketing, has approved an increase in CARE Denmark's framework grant for 2008 of DKK 5 million, so that the total framework grant from the Ministry of Foreign Affairs in 2008 amounts to DKK 43 million. However, there is uncertainty as to supplementary Danida individual projects, including grants for climate adaptation projects. The stable cooperation with the EU is also expected to continue in 2008.

No events have occurred after the end of the financial year which would materially influence CARE Denmark's financial position.

Expenses according to sector 2007



Expenses according to countries 2007



OPERATING STATEMENT

for the period of 1 January 2007 - 31 December 2007

	2007 (1,000 DKK)	2006 (1,000 DKK)
REVENUES		
RESTRICTED REVENUES		
Public Project Support	62,089	51,992
Private Contributions	3,505	2,119
TOTAL RESTRICTED REVENUES	65,594	54,111
Accrued Public Project Support	2,361	1,622
TOTAL RESTRICTED REVENUES	67,955	55,733
OTHER REVENUES		
Private Contributions	13,567	13,573
Administration fee	4,751	3,788
Other	2,534	1,151
TOTAL OF OTHER REVENUES	20,852	18,512
TOTAL REVENUES	88,806	74,245
EXPENSES		
USE OF RESTRICTED FUNDS		
Projects and Programmes	67,547	55,038
Information Activities	0	0
TOTAL USE OF RESTRICTED FUNDS	67,547	55,038
USE OF UNRESTRICTED FUNDS		
Projects and Programmes	2,042	719
Information/PR	538	743
Fundraising	4,371	4,522
Administration		
<i>Salaries</i>	9,064	8,284
<i>Operating costs (rent, office running, travel etc.)</i>	3,443	2,674
<i>CARE International</i>	386	368
<i>Depreciations</i>	481	557
Total Administration	13,374	11,883
TOTAL USE OF UNRESTRICTED FUNDS	20,326	17,867
TOTAL EXPENSES	87,873	72,905
THE RESULT FOR THE YEAR	934	1,340
THE RESULT FOR THE YEAR IS DISPOSED AS FOLLOWS:		
Transferred to Available Capital	526	645
Adjustment to Restricted Allocations	408	695
TOTAL	934	1,340

BALANCE SHEET

on 31 December 2007

ASSETS	2007 (1,000 DKK)	2006 (1,000 DKK)
FIXED ASSETS		
Rent Deposit	223	212
Computer Equipment	629	716
Vehicle	337	28
Other Fixed Assets	226	336
TOTAL FIXED ASSETS	1,415	1,292
CURRENT ASSETS		
Receivables		
Public Project Support	6,768	10,235
Other Debtors	2,122	1,919
Inventory/Stocks	150	150
Pre-payments and Accrued Income	78	181
Total Receivables	9,119	12,485
Cash	12,991	12,870
TOTAL CURRENT ASSETS	22,110	25,355
TOTAL ASSETS	23,525	26,647
LIABILITIES		
NET ASSETS		
Designated Capital		
Fund Capital	200	200
Total Designated Capital	200	200
Available Capital		
Adjustment of project balance from previous year	583	
Balance 01.01	1,987	647
Annual Adjustment	934	1,340
Total Available Capital	3,504	1,987
TOTAL NET ASSETS	3,704	2,187
DEBT		
Debt to Bank (max.DKK 1,400 in 2007)	1,349	1,293
CARE International pre-financing of EU project	0	3,500
Project Accounts	15,260	17,621
Other Debts	3,212	2,046
TOTAL DEBT	19,821	24,460
TOTAL LIABILITIES	23,525	26,647

STORIES FROM A DIFFERENT WORLD

20



Photo: Tine Harden

CARE Denmark's work takes place far away from Denmark – but not far away from the Danes. In order to bring actual experiences and opinions home from the field, CARE Denmark has teamed up with a number of professional and famous communicators who visit CARE's projects and partners and passionate people around the world. These well-known Danes constitute CARE Denmark's corps of 'Storytellers'.

In 2007, a number of companies and associations took the opportunity to hear about a world far from Denmark. People like Actress Viggja Bro, TV host 'Gorm', and former Lord Chamberlain Søren Haslund-Christensen visited primary schools, folk high schools, commercial colleges, church councils, the DaneAge Association, private enterprises, and friendship associations to spread knowledge of developing countries and CARE Denmark's work. Globe-trotter Bettina Aller had an even larger stage when she appeared several times on national TV and in magazines telling about the work in the field.



BETTINA ALLER

'CARE Denmark suits my temperament well – CARE Denmark takes responsibility and acts. I have seen, with my own eyes, the actual effect of the work that is carried out close to the people fighting on the edge of what is possible in some of the poorest parts of the world. The work is performed in cooperation with, and with respect for, the people we wish to help and strengthen. And it does not have to be an impenetrable or mysterious process. It is an efficient mechanism and it really works.'



VIGGJA BRO

'What captivates me are organisations that operate at the level of the people they help – organisations that are close to people and that say: "We must teach them not to need us." CARE goes in close, and that really counts. Among other things, I have seen the rain forest which 100 years ago covered most of Ghana being cut down so fast that it is on the point of disappearing completely. The Ghanaian government, as well as the multinational companies, are the bad guys. But when the forest farmers plant their own rain forest, the forest is their own. And even though they fight like pygmies against giants – and progress is made slowly – they are proud of their work.'



HANS GEORG MØLLER, 'GORM'

'I support CARE Denmark not least because I like its value base, "Strengthening self-help". It is important that we do not treat the poor people of the world as clients, but help them develop society on their own terms and in cooperation with local authorities. If you only put food into people's mouths without making demands, you take away their self-esteem. Some aid organisations concentrate on relief work. CARE is dedicated to enabling people to get by on their own, so that relief becomes unnecessary.'



SØREN HASLUND-CHRISTENSEN

'I tell people about CARE Denmark's work because I know it is useful and that it has helped many people. CARE should continue to do this – in as many places as possible. Their approach is well-suited for aid work. In Ghana, it was very encouraging for me to see how CARE's work considered the old traditions in the area as well as the challenges of the future. In the projects in the boundary areas between forest and agriculture, the population is battling against increased immigration and the hard fact that more people need to find wood. Without CARE's efforts, there would be many more conflicts.'